

Name: *Cacopsylla sorbi* (Linnaeus, 1758)

Synonyms: *Psylla sorbi*; *Cacopsylla (Thamnopsylla) sorbi*

Distribution: Austria, Bulgaria, Czech Republic, Denmark, Estonia, Finland, Germany, Ireland, Italy, Latvia, Norway, Poland, Russia, Slovakia, Sweden, Switzerland, United Kingdom; introduced into the USA

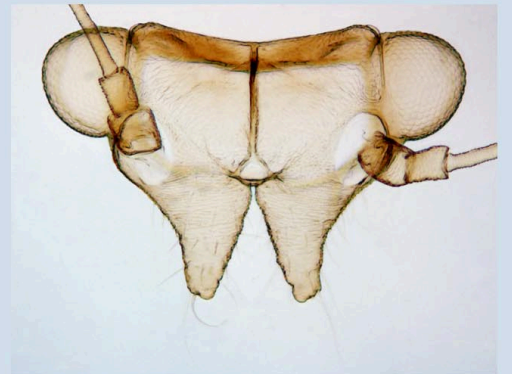
Host plants: *Sorbus aucuparia*, *S. amurensis*, *Pyrus americana*



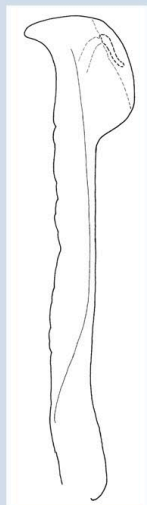
nymph



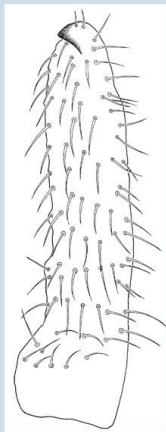
adult (female)



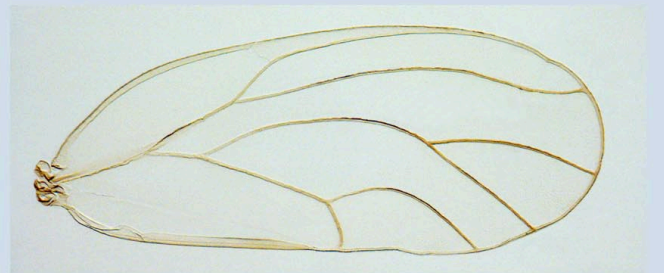
head



→ distal portion of aedeagus



→ paramere



forewing



male terminalia



female terminalia